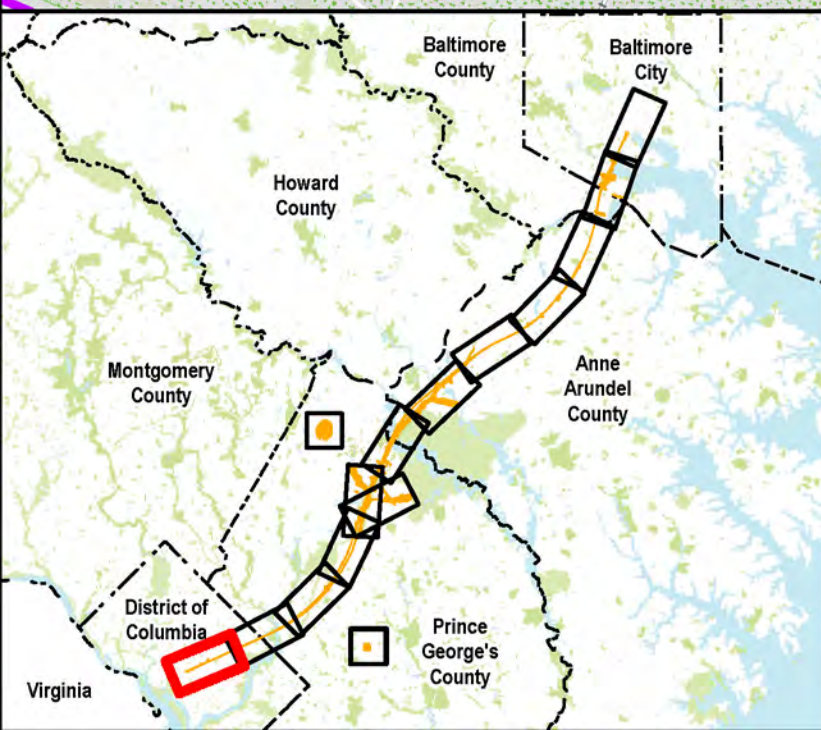
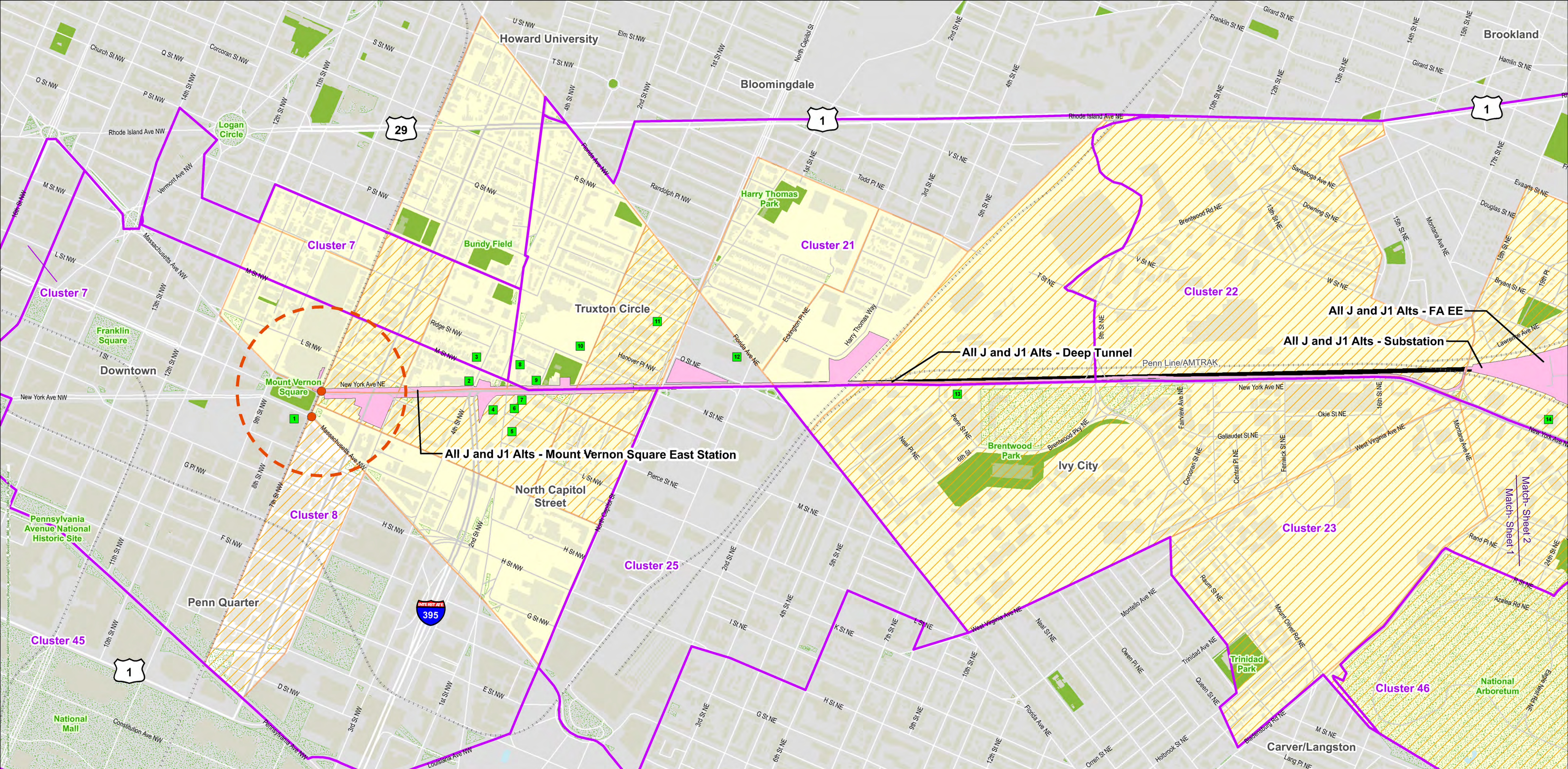


## *A*ppendix B.2

---

### **Socioeconomic and Community Resources**





- Tunnel Sections

Surface & Elevated Sections
- Air Quality

Analyzed Intersections

1000-Foot Radius of Analyzed Intersections
- Environmental Justice Areas

Minority Population

Low Income Population
- Community Facilities

Surface Waters

Neighborhood Boundaries
- Parklands

DC

Federal

- Community Facilities**

1

Techworld Post Office

2

First Tabernacle Beth El

3

Church of The Living God Pillar Ground of The Truth

4

Bible Way Temple

5

Walker-Jones Education Campus

6

Holy Redeemer School

7

Holy Redeemer Catholic Church

8

Mt Lebanon Baptist Church

9

New Birth Baptist Church Washington

10

Dunbar High School

11

Mundo Verde Bilingual PCS

12

Metropolitan Police Department - Internal Affairs Division

13

Mount Carmel Miracle Temple Of God

14

Salvation Army Harbor Light Center

**BALTIMORE-WASHINGTON SCMAGLEV PROJECT**

N

0

600

1,200

1,800

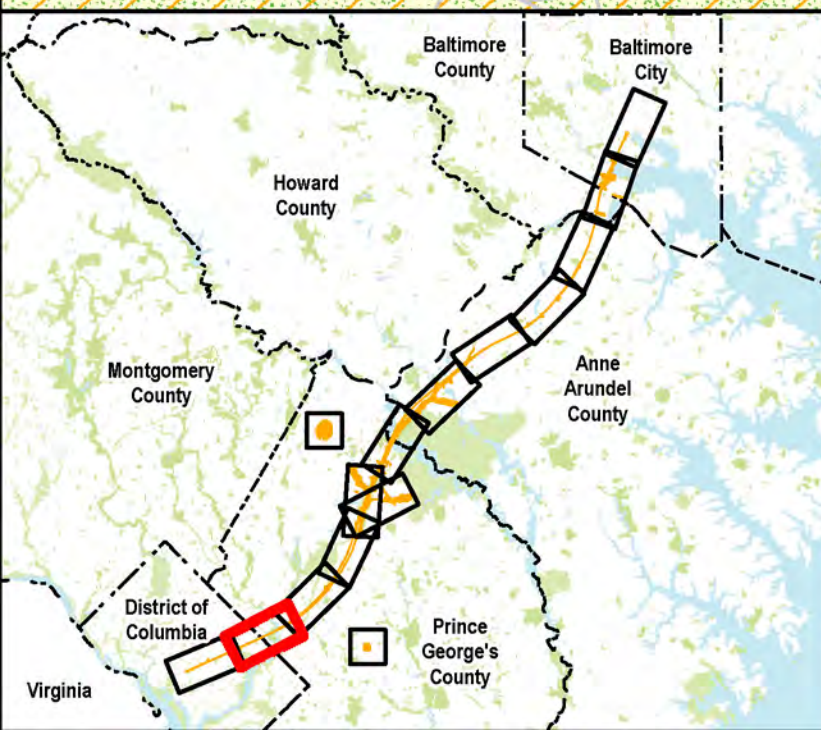
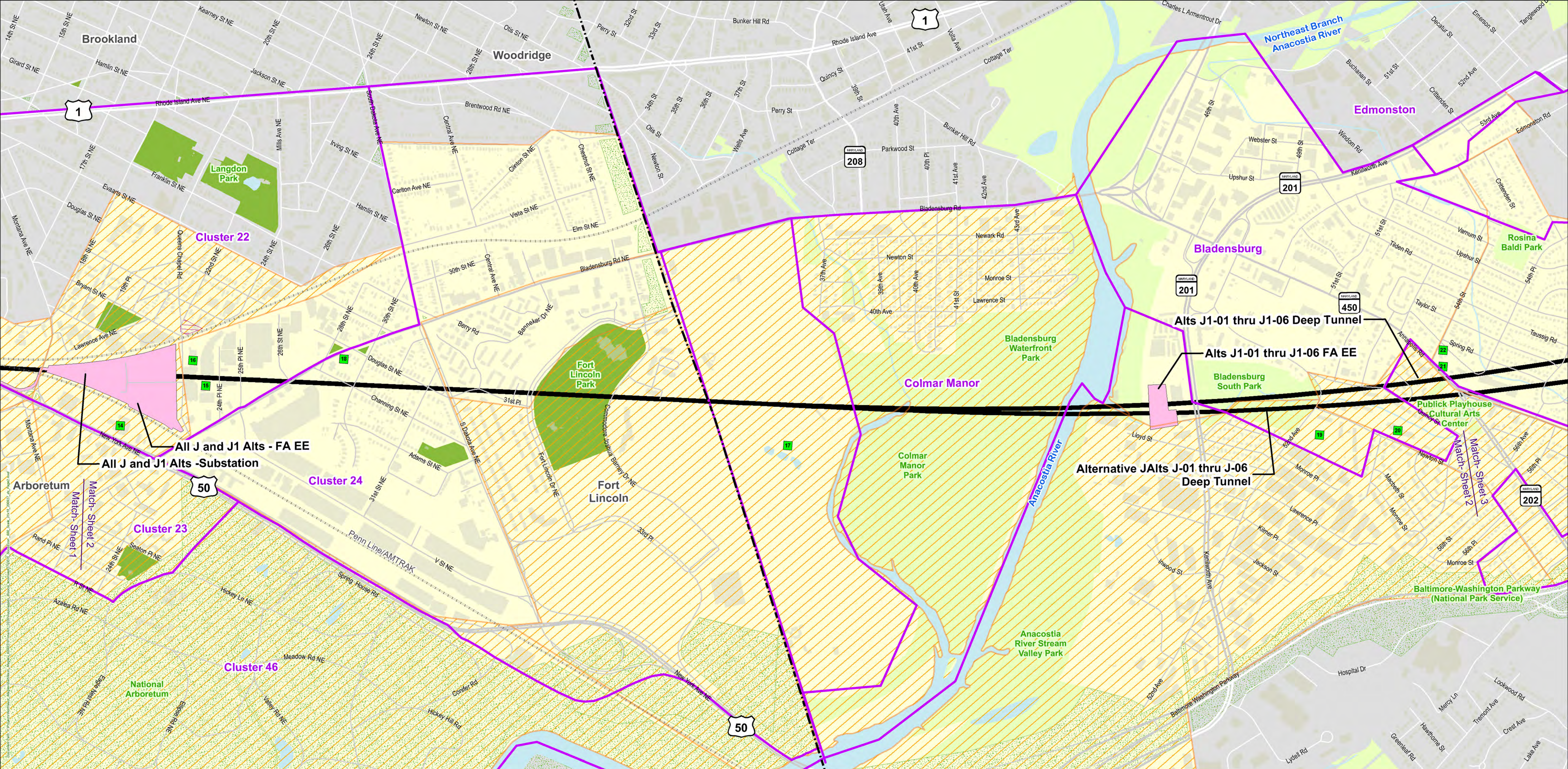
Feet

**Socioeconomic and Community Resources**

Sheet 1 of 14

Important Note: These maps illustrate the Build Alternatives(alignments, stations, TMF, and ancillary facilities). Locations represented are approximate and are subject to change during the planning process.





Tunnel Sections

Surface & Elevated Sections

Moderate Noise Impacts

Minority Population

Low Income Population

Environmental Justice Areas

Community Facilities

Surface Waters

Neighborhood Boundaries

Parklands

County

DC

Federal

14

Salvation Army Harbor Light Center

15

First Christ Apostolic Church

16

The Children's Guild DC Public Charter School

17

Fort Lincoln Cemetery

18

Trinity Religious Temple Church

19

Evergreen Cemetery

20

Newton Green

21

Central Baptist Church

22

Tower of Praise Church International

Map legend includes only features found on each sheet's coverage

N

0

600

1,200

1,800

Feet

BALTIMORE-WASHINGTON SCMAGLEV PROJECT

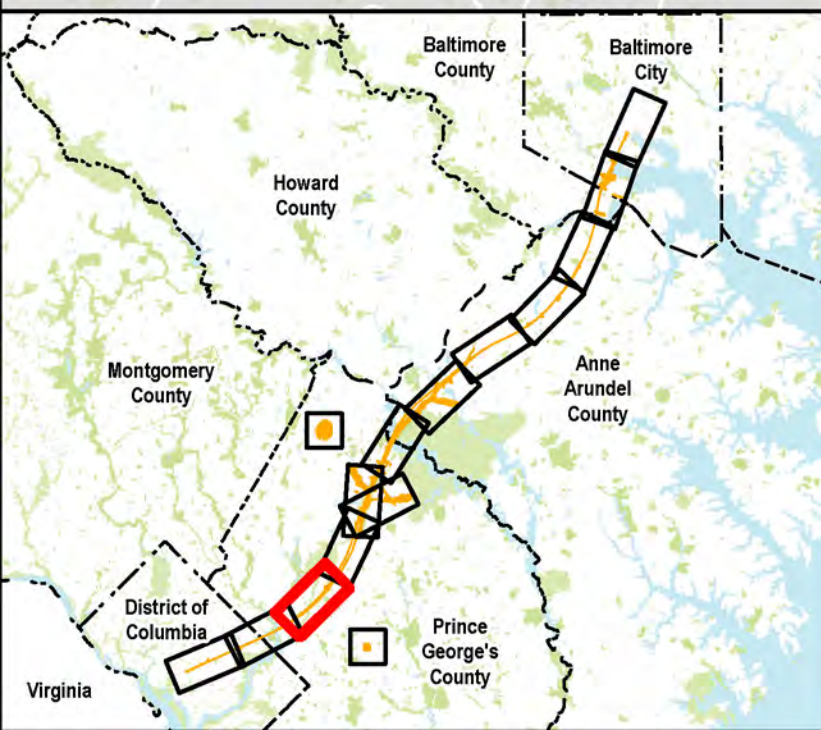
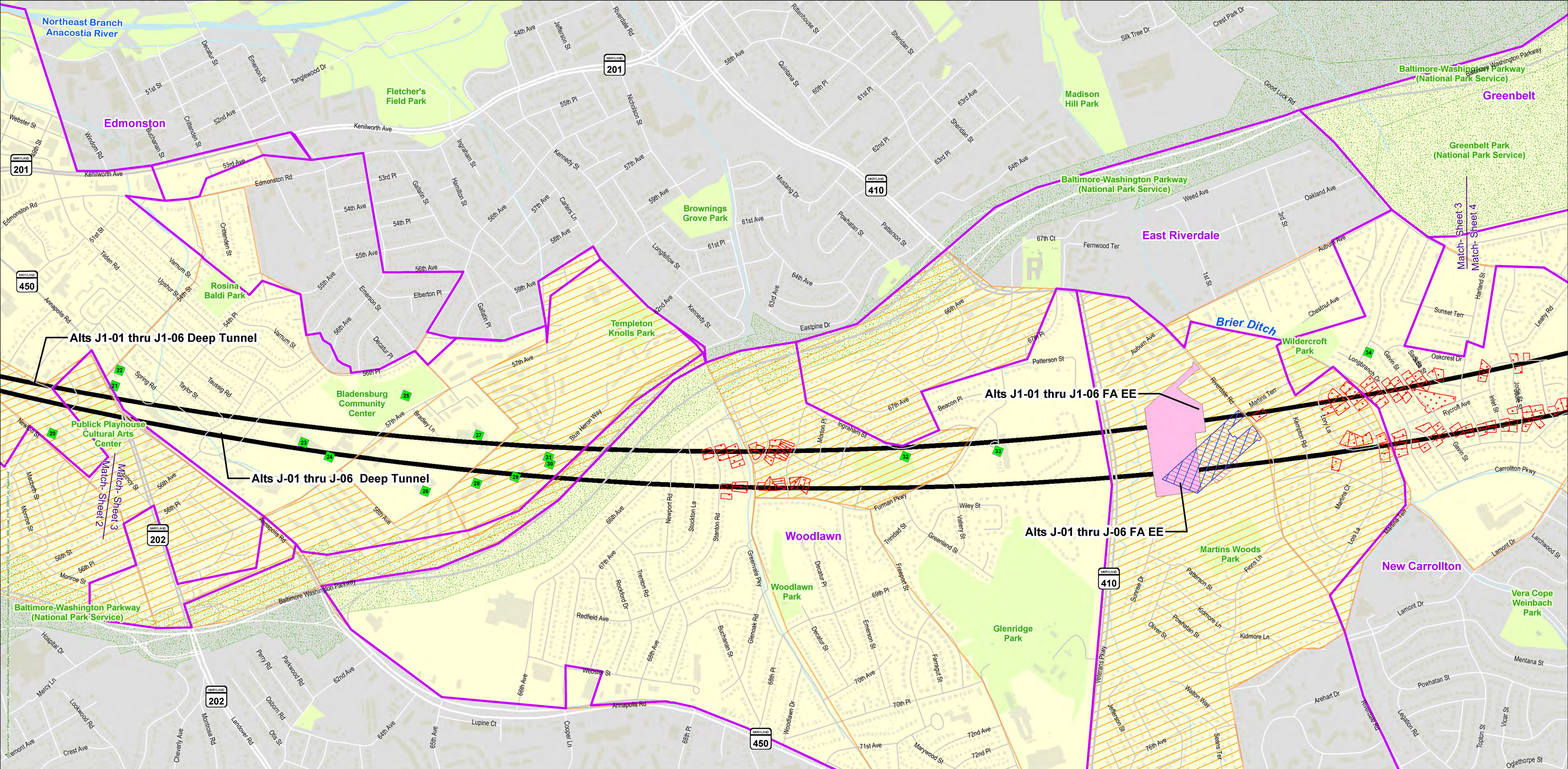
Socioeconomic and Community Resources

Sheet 2 of 14

Important Note: These maps illustrate the Build Alternatives(alignments, stations, TMF, and ancillary facilities). Locations represented are approximate and are subject to change during the planning process.

BALTIMORE-WASHINGTON SUPERCONDUCTING MAGLEV PROJECT





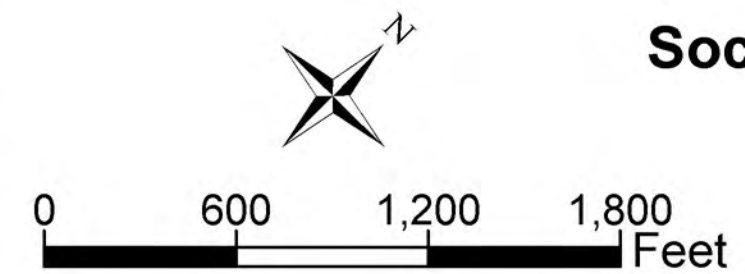
- Tunnel Sections**
- Surface & Elevated Sections**
- Vibration & Noise**
- Environmental Justice Areas**
- Community Facilities**
- Surface Waters**
- Neighborhood Boundaries**
- Parklands**
- County**
- Federal**
- Minority Population**
- Low Income Population**

Map legend includes only features found on each sheet's coverage

- Community Facilities**
- |    |                                      |    |  |
|----|--------------------------------------|----|--|
| 20 | Newton Green                         | 29 | Port Towns Elementary School                   |
| 21 | Central Baptist Church               | 30 | Emerson House                                  |
| 22 | Tower of Praise Church International | 31 | Womens of The Word                             |
| 23 | Bladensburg High School              | 32 | Cherry Hill Cemetery                           |
| 24 | Even Start Early Learning Center     | 33 | Beacon Heights Elementary School               |
| 25 | Bladensburg Community Center         | 34 | Watchman Catholic Charismatic Renewal Movement |
| 26 | Parkview at Bladensburg              |    |  |
| 27 | Elizabeth Seton High School          |    |  |
| 28 | Rogers Heights Elementary School     |    |  |

# BALTIMORE-WASHINGTON SCMAGLEV PROJECT

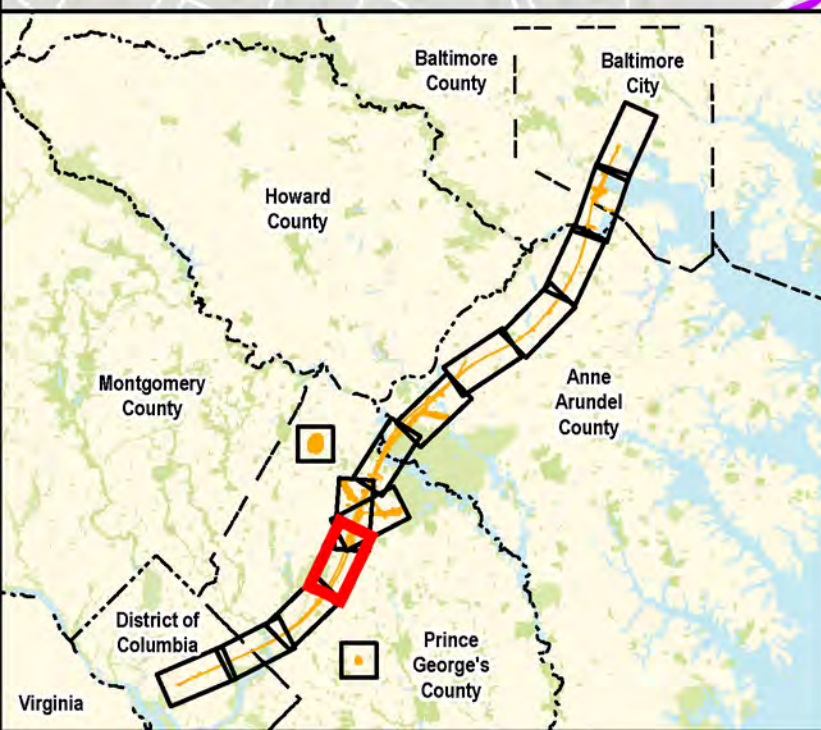
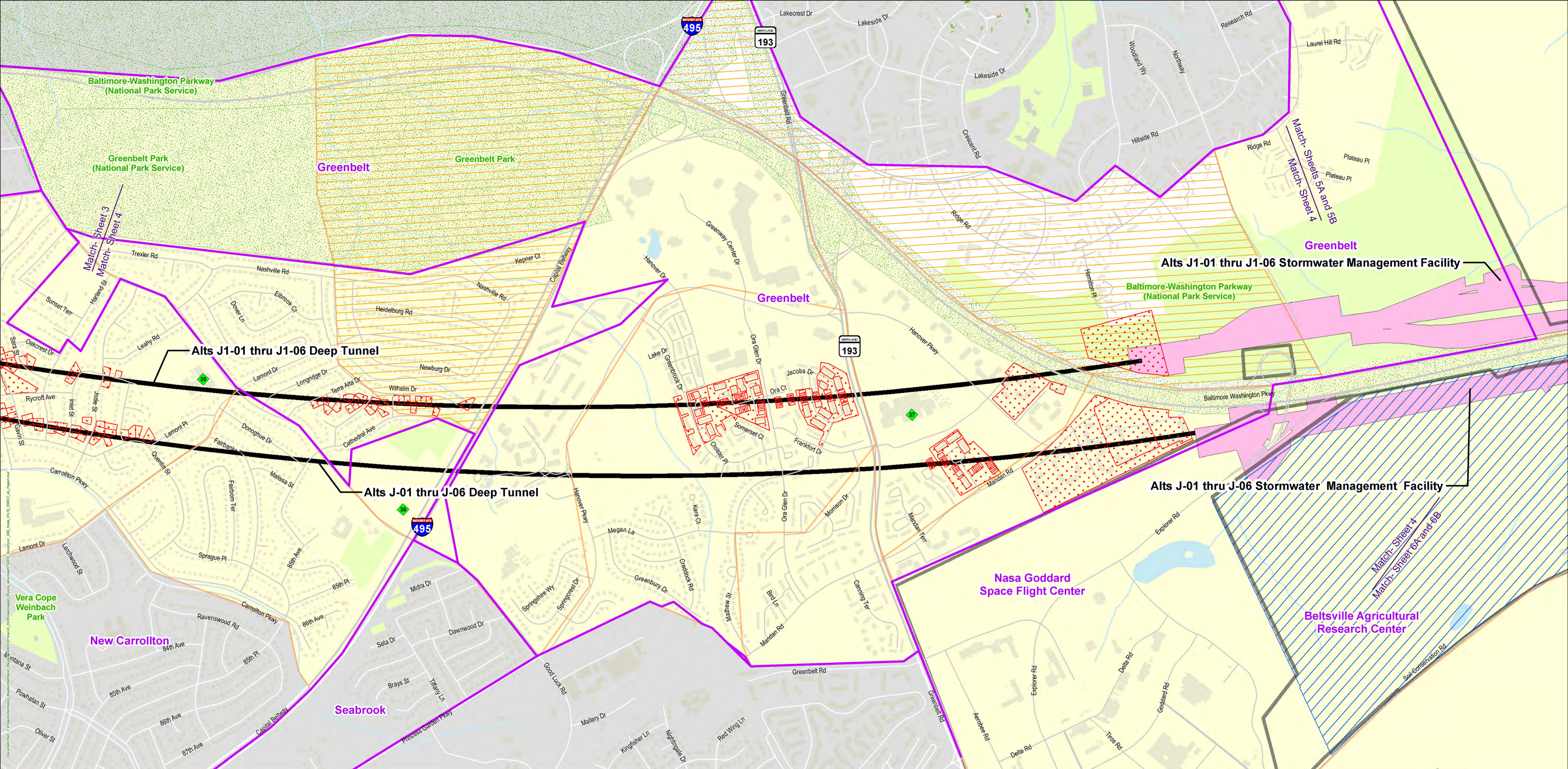
## Socioeconomic and Community Resources



Important Note: These maps illustrate the Build Alternatives(alignments, stations, TMF, and ancillary facilities). Locations represented are approximate and are subject to change during the planning process.







Tunnel Sections

Surface & Elevated Sections

Vibration Impacts

Severe Noise Impacts

Minority Population

Low Income Population

Community Facilities

Surface Waters

Neighborhood Boundaries

Parklands

County

Federal

Other Federal Protected Areas

Lamont Elementary School

New Carrollton Bible Church

Eleanor Roosevelt High School

Map legend includes only features found on each sheet's coverage

0

600

1,200

1,800

Feet

North

BALTIMORE-WASHINGTON SCMAGLEV PROJECT

Socioeconomic and Community Resources

Sheet 4 of 14

Important Note: These maps illustrate the Build Alternatives(alignments, stations, TMF, and ancillary facilities). Locations represented are approximate and are subject to change during the planning process.





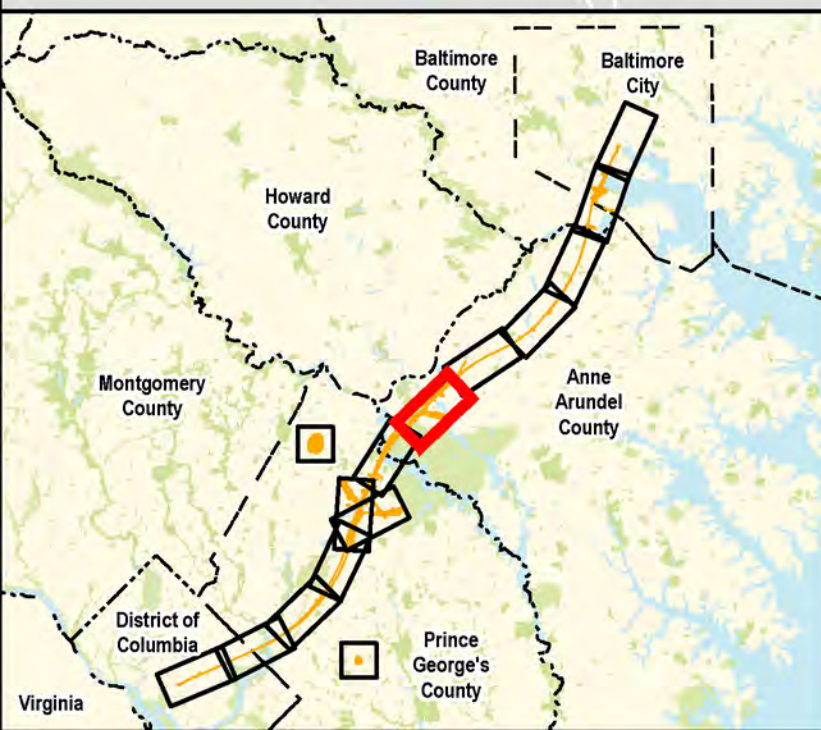
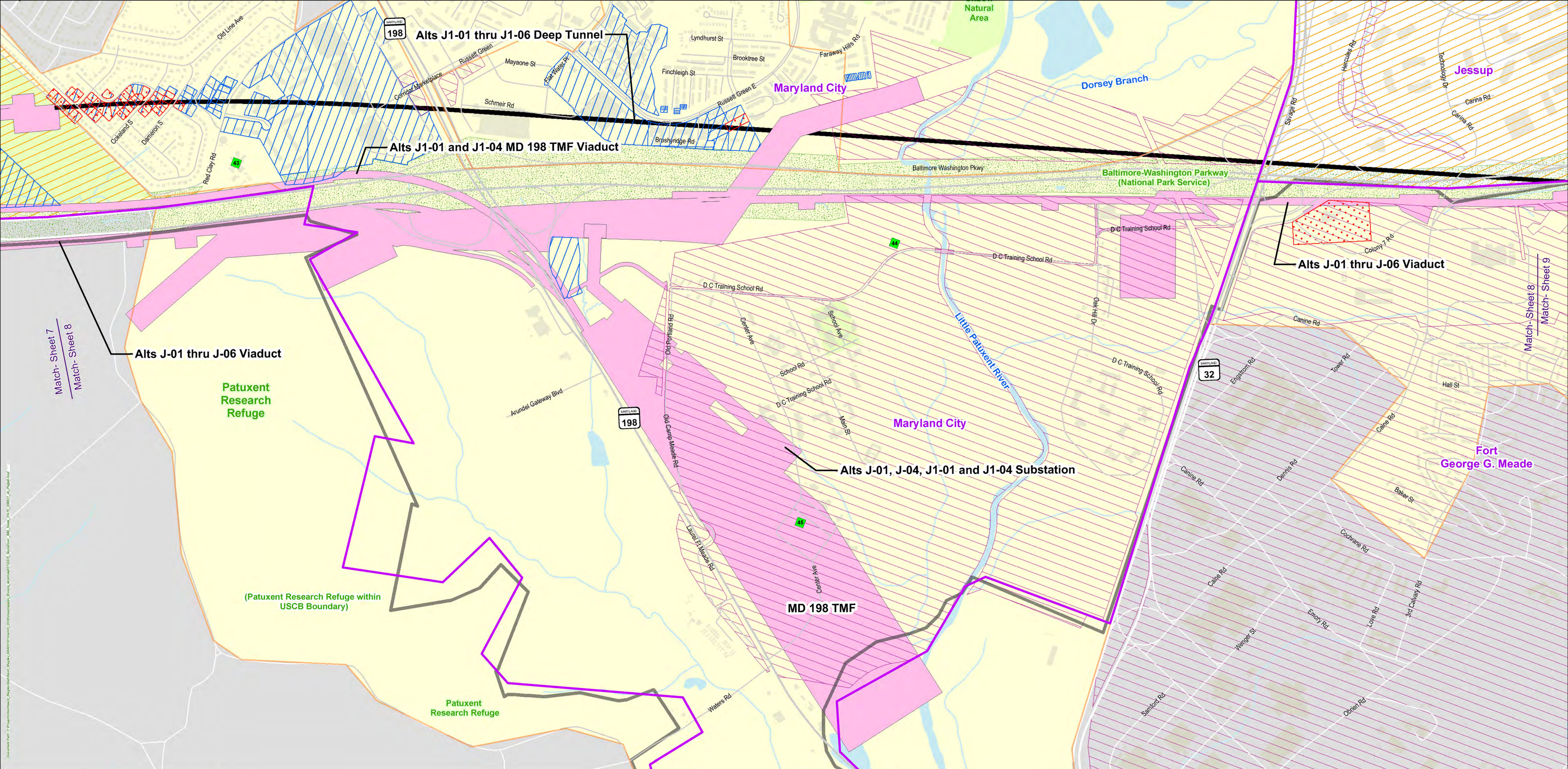












Tunnel Sections

Surface & Elevated Sections

Vibration Impacts

Moderate Noise Impacts

Severe Noise Impacts

Minority Population

Low Income Population

Community Facilities

Surface Waters

Neighborhood Boundaries

Parklands

County

Federal

Other Federal Protected Areas

Waxters Children Center

Training School Cemetery

Woodland Job Corps

Map legend includes only features found on each sheet's coverage

Community Facilities

Waxters Children Center

Training School Cemetery

Woodland Job Corps

0

600

1,200

1,800

Feet

1

2

3

4

5

6

7

8

9

0

1

2

3

4

5

6

7

8

9

0

1

2

3

4

5

6

7

8

9

0

1

2

3

4

5

6

7

8

9

0

1

2

3

4

5

6

7

8

9

0

1

2

3

4

5

6

7

8

9

0

1

2

3

4

5

6

7

8

9

0

1

2

3

4

5

6

7

8

9

0

1

2

3

4

5

6

7

8

9

0

1

2

3

4

5

6

7

8

9

0

1

2

3

4

5

6

7

8

9

0

1

2

3

4

5

6

7

8

9

0

1

2

3

4

5

6

7

8

9

0

1

2

3

4

5

6

7

8

9

0

1

2

3

4

5

6

7

8

9

0

1

2

3

4

5

6

7

8

9

0

1

2

3

4

5

6

7

8

9

0

1

2

3

4

5

6

7

8

9

0

1

2

3

4

5

6

7

8

9

0

1

2

3

4

5

6

7

8

9

0

1

2

3

4

5

6

7

8

9

0

1

2

3

4

5

6

7

8

9

0

1

2

3

4

5

6

7

8

9

0

1

2

3

4

5

6

7

8

9

0

1

2

3

4

5

6

7

8

9

0

1

2

3

4

5

6

7

8

9

0

1

2

3

4

5

6

7

8

9

0

1

2

3

4

5

6

7

8

9

0

1

2

3

4

5

6

7

8

9

0

1

2

3

4

5

6

7

8

9

0

1

2

3

4

5

6

7

8

9

0

1

2

3

4

5

6

7

8

9

0

1

2

3

4

5

6

7

8

9

0

1

2

3

4

5

6

7

8

9

0

1

2

3

4

5

6

7

8

9

0

1

2

3

4

5

6

7

8

9

0

1

2

3

4

5

6

7

8

9

0

1

2

3

4

5

6

7

8

9

0

1

2

3

4

5

6

7

8

9

0

1

2

3

4

5

6

7

8

9

0

1

2

3

4

5

6

7

8

9

0

1

2

3

4

5

6

7

8

9

0

1

2

3

4

5

6

7

8

9

0

1

2

3

4

5

6

7

8

9

0

1

2

3

4

5

6

7

8

9

0

1

2

3

4

5

6

7

8

9

0

1

2

3

4

5

6

7

8

9

0

1

2

3

4

5

6

7

8

9

0

1

2

3

4

5

6

7

8

9

0

1

2

3

4

5

6

7

8

9

0

1

2

3

4

5

6

7

8

9

0

1

2

3

4

5

6

7

8

9

0

1

2

3

4

5

6

7

8

9

0

1

2

3

4

5

6

7

8

9

0

1

2

3

4

5

6

7

8

9

0

1

2

3

4

5

6

7

8

9

0

1

2

3

4

5

6

7

8

9

0

1

2

3

4

5

6

7

8

9

0

1

2

3

4

5

6

7

8

9

0

1

2

3

4

5

6

7

8

9

0

1

2

3

4

5

6

7

8

9

0

1

2

3

4

5

6

7

8

9

0

1

2

3

4

5

6

7

8

9

0

1

2

3

4

5

6

7

8

9

0

1

2

3

4

5

6

7

8

9

0

1

2

3

4

5

6

7

8

9

0

1

2

3

4

5

6

7

8

9

0

1

2

3

4

5

6

7

8

9

0

1

2

3

4

5

6

7

8

9

0

1

2

3

4

5

6

7

8

9

0

1

2

3

4

5

6

7

8

9

0

1

2

3

4

5

6

7

8

9

0

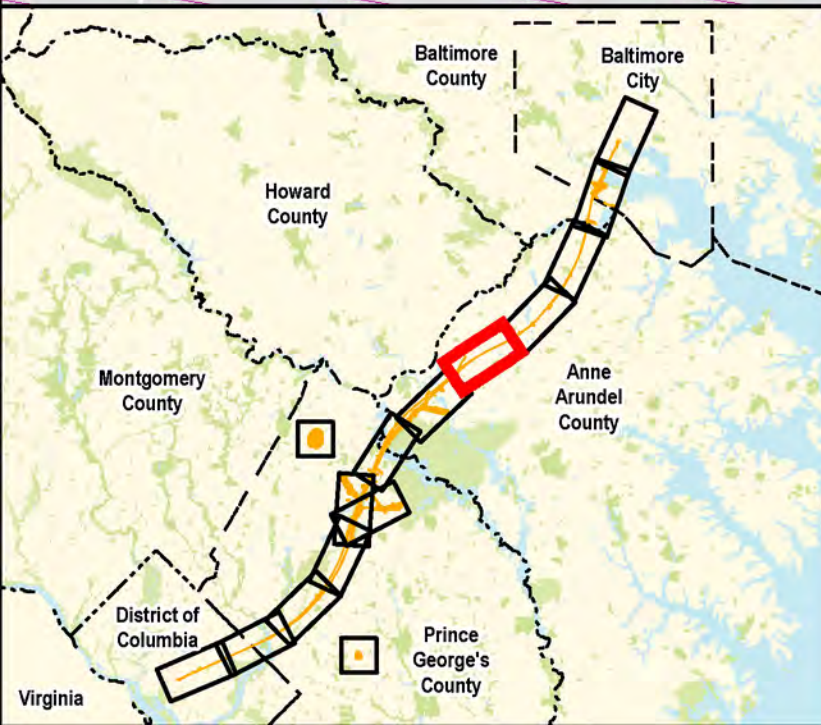
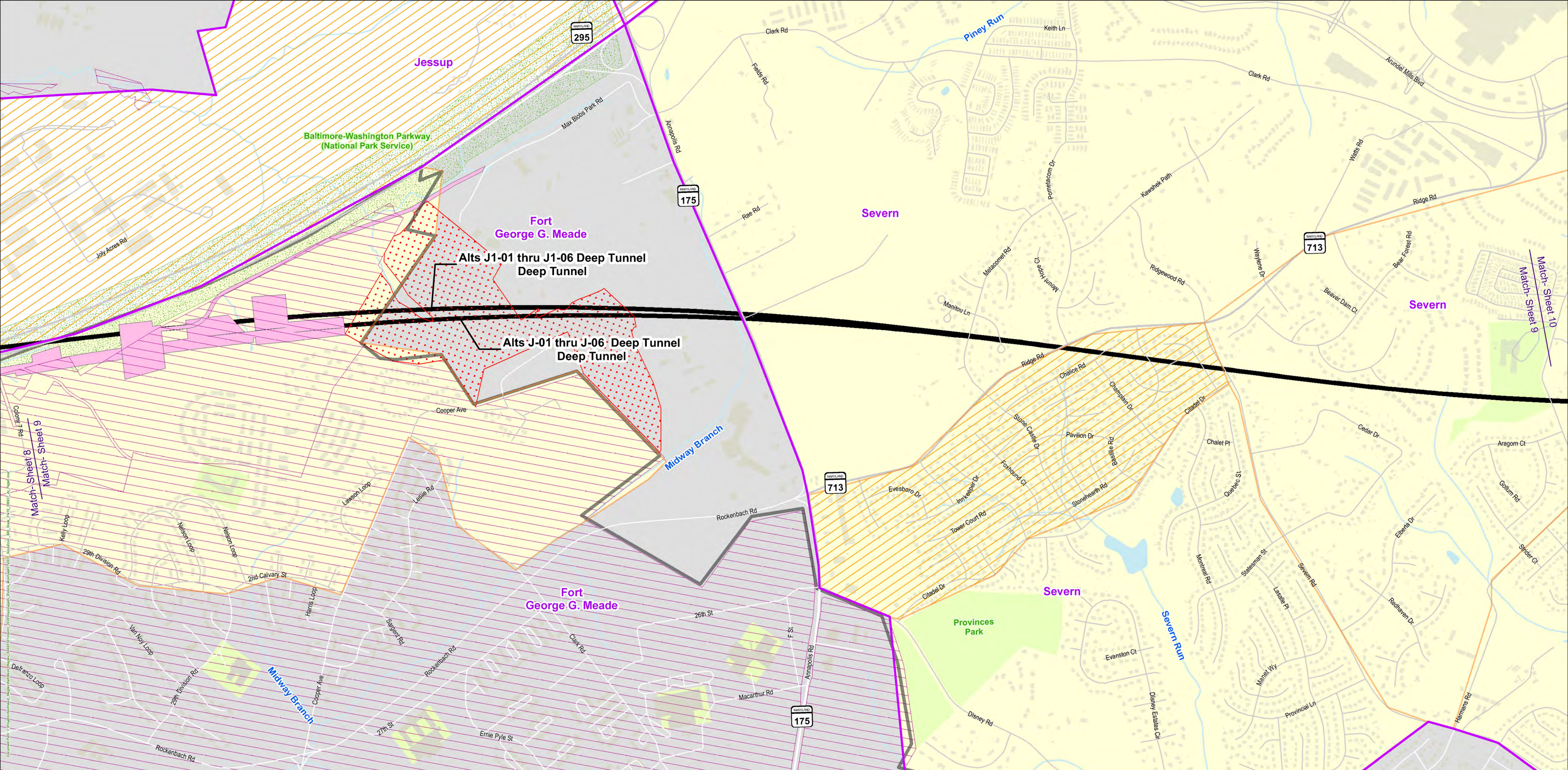
1

2

3

4





- Tunnel Sections
- Surface & Elevated Sections
- Vibration & Noise**
- Vibration Impacts
- Moderate Noise Impacts
- Environmental Justice Areas**
- Minority Population
- Low Income Population

- Community Facilities
- Surface Waters
- Neighborhood Boundaries
- Parklands**
- County
- Federal
- Other Federal Protected Areas

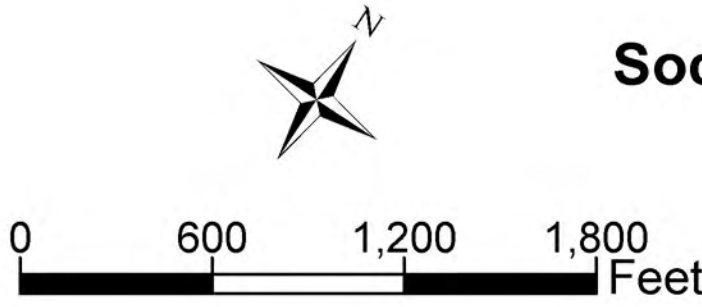
Map legend includes only features found on each sheet's coverage

**Community Facilities**

NA

# BALTIMORE-WASHINGTON SCMAGLEV PROJECT

## Socioeconomic and Community Resources

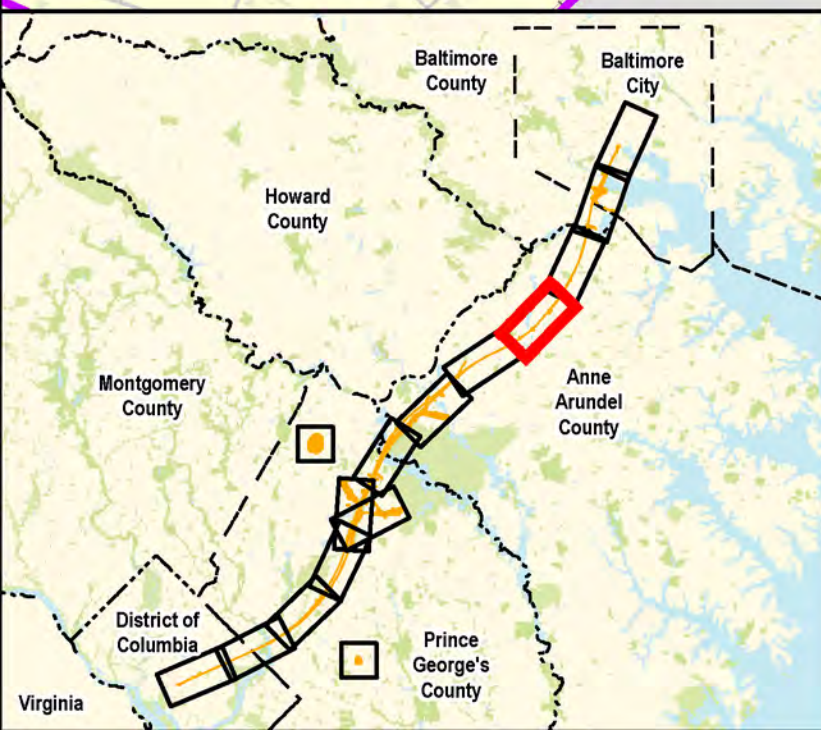
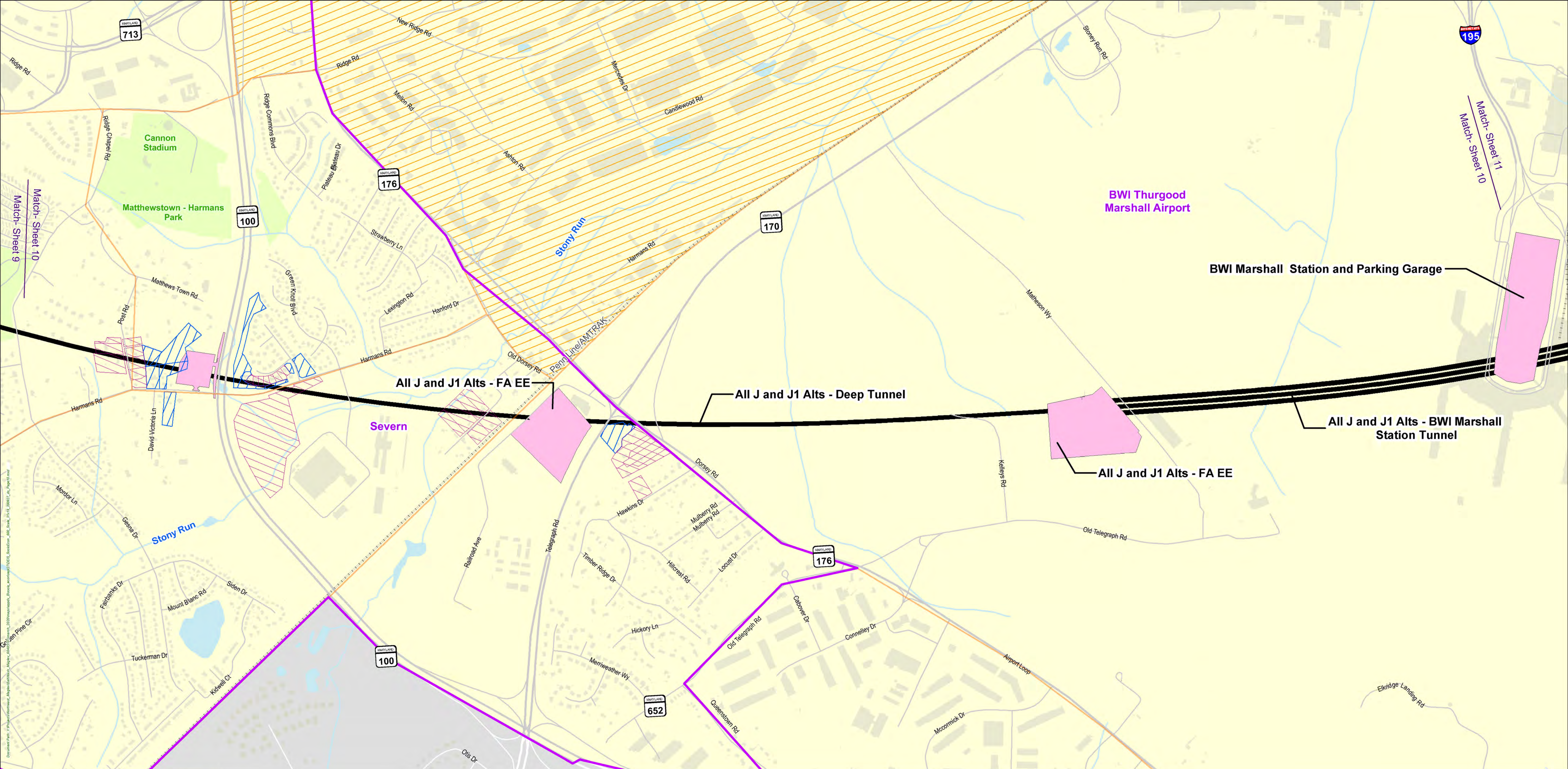


Sheet 9 of 14

Important Note: These maps illustrate the Build Alternatives (alignments, stations, TMF, and ancillary facilities). Locations represented are approximate and are subject to change during the planning process.







**Tunnel Sections**

**Surface & Elevated Sections**

**Vibration & Noise**

- Moderate Noise Impacts
- Severe Noise Impacts

**Environmental Justice Areas**

- Minority Population
- Low Income Population

**Community Facilities**

NA

**Surface Waters**

**Neighborhood Boundaries**

**Parklands**

County

# BALTIMORE-WASHINGTON SCMAGLEV PROJECT

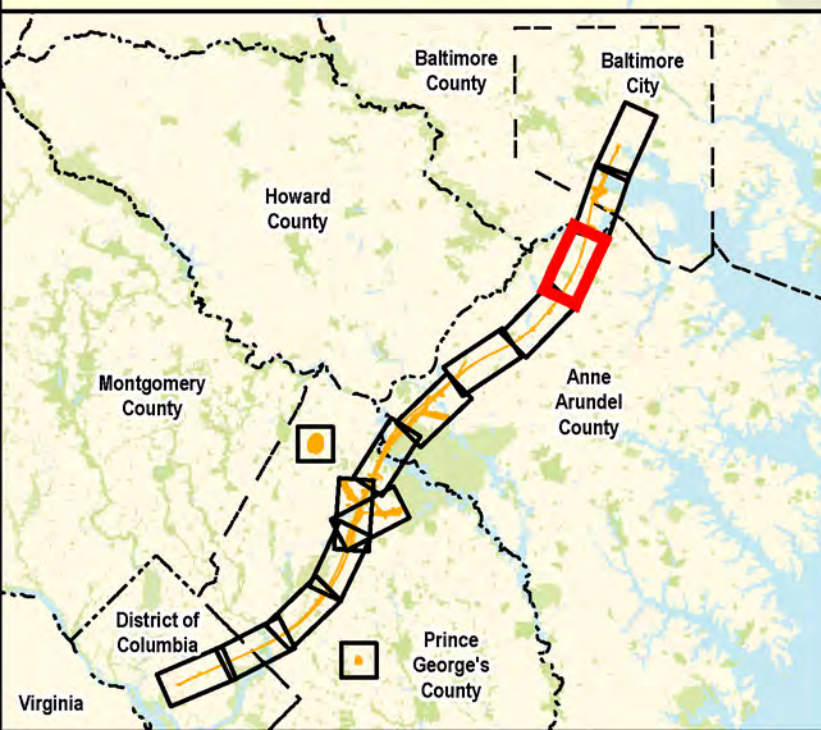
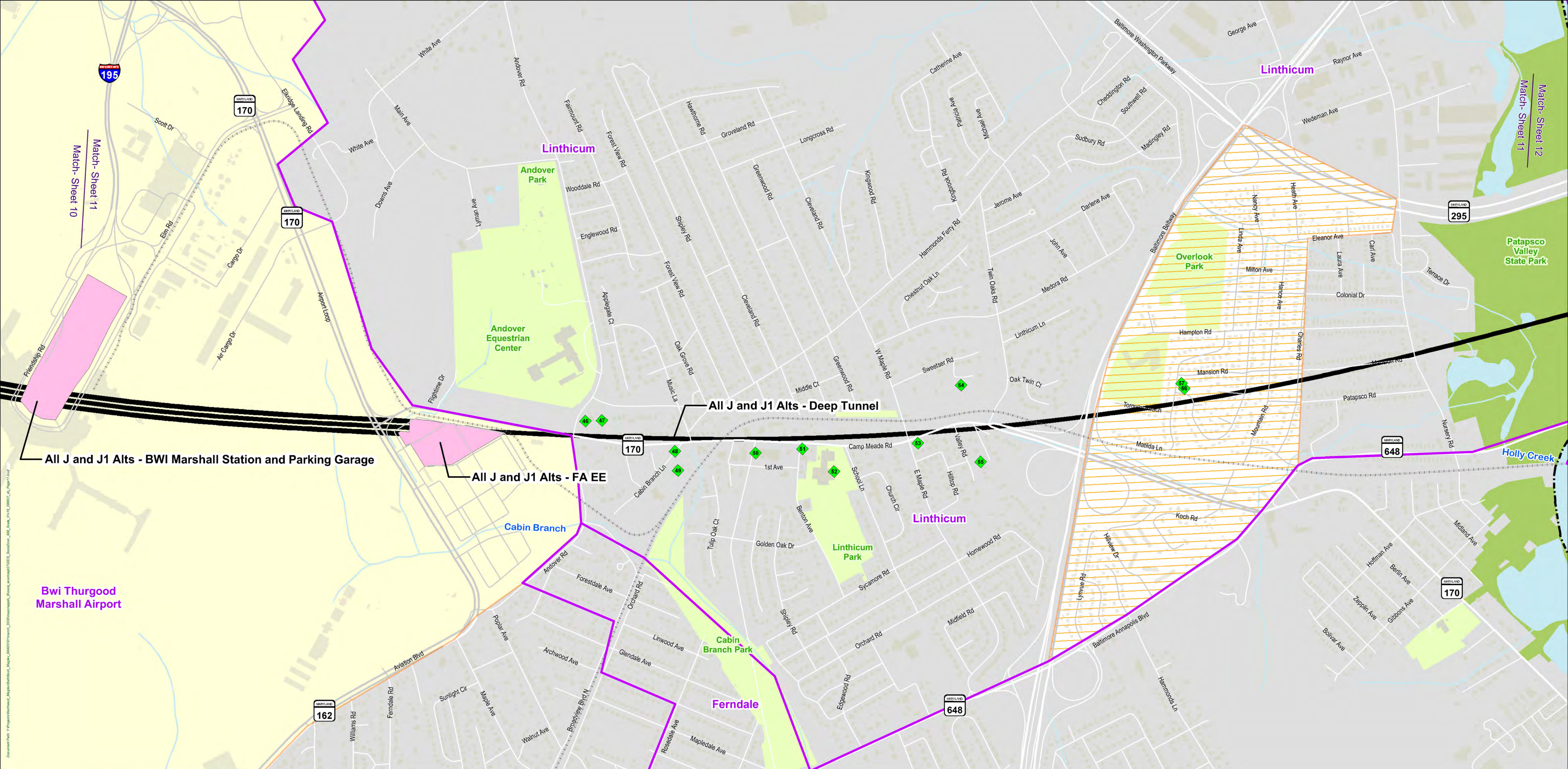
## Socioeconomic and Community Resources

0 600 1,200 1,800 Feet

Sheet 10 of 14

Important Note: These maps illustrate the Build Alternatives(alignments, stations, TMF, and ancillary facilities). Locations represented are approximate and are subject to change during the planning process.





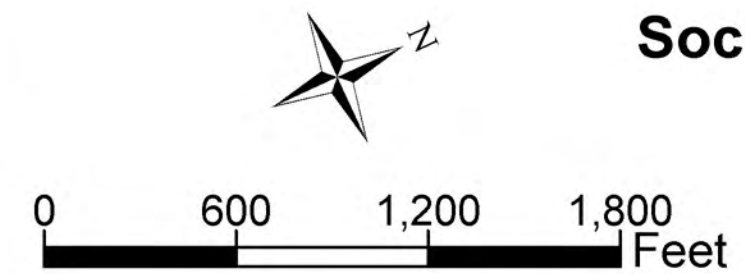
- Tunnel Sections
- Surface & Elevated Sections
- Minority Population
- Low Income Population
- Community Facilities
- Surface Waters
- Neighborhood Boundaries
- County
- State

Map legend includes only features found on each sheet's coverage

- Community Facilities**
- |   |  |
|---|--|
| Heart Homes At Linthicum I                                | Linthicum Elementary School                      |
| Heart Homes At Linthicum II                               | Holy Cross Antiochian Orthodox Church            |
| Jehovah's Witnesses (Kingdom Hall of Jehovah's Witnesses) | St. Christophers Episcopal Church                |
| Linthicum Baptist Church                                  | Eldercare Gardens At Linthicum                   |
| Linthicum Heights Post Office                             | Friendship Church of The Brethren                |
| Company 32 - Linthicum Volunteer Fire Company             | Friendship Church of the Brethren Nursery School |

# BALTIMORE-WASHINGTON SCMAGLEV PROJECT

## Socioeconomic and Community Resources

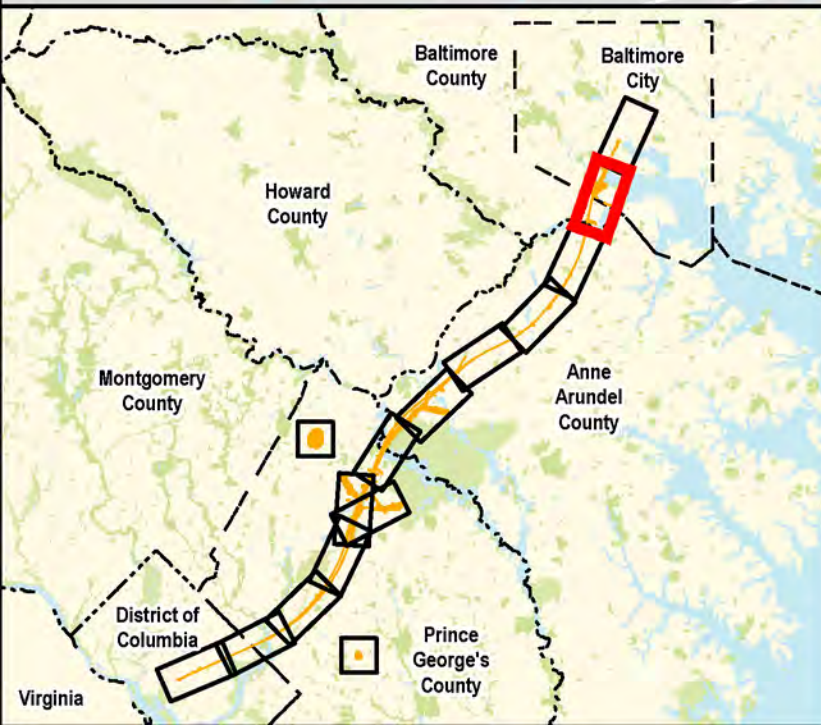
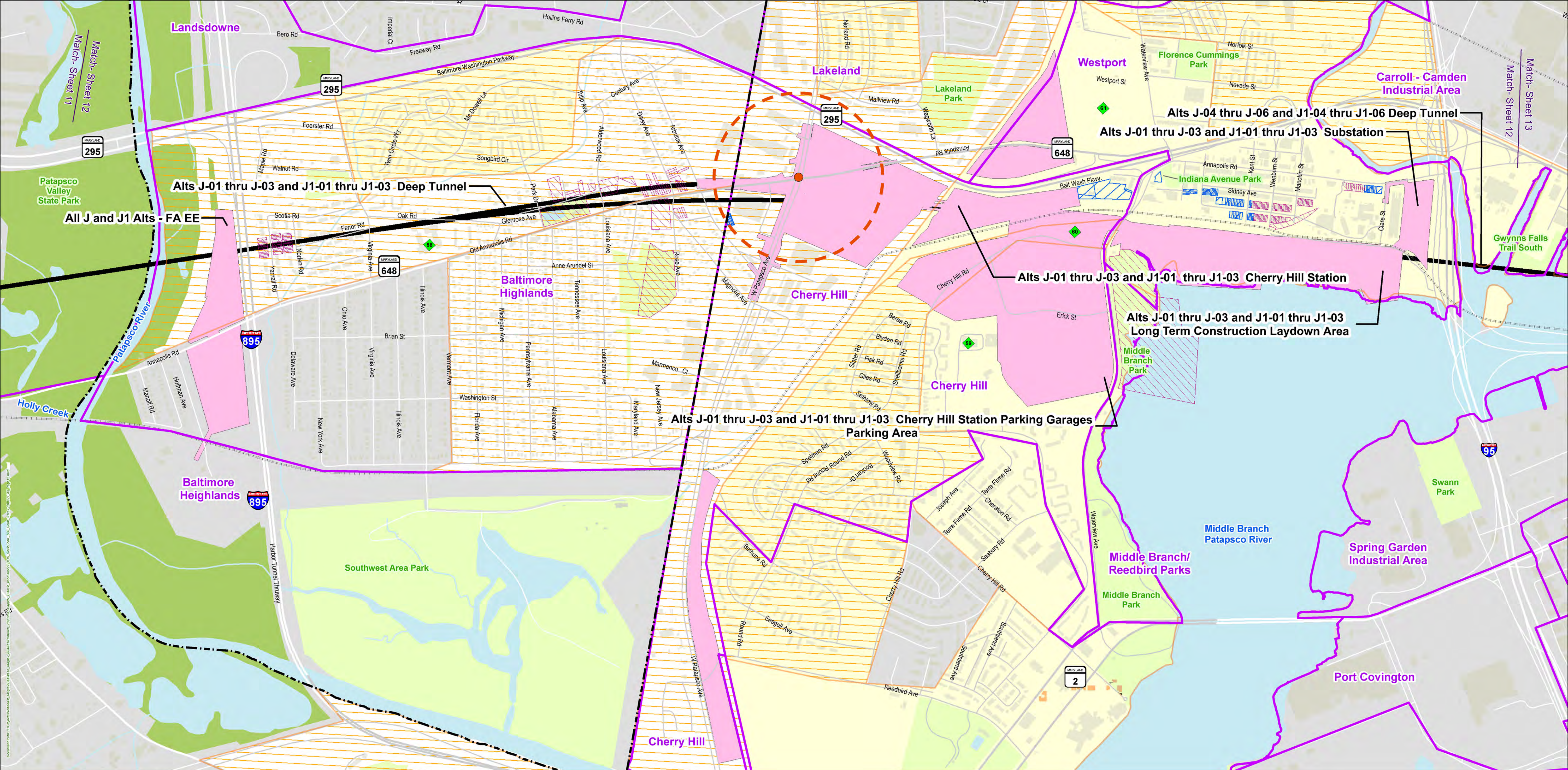


Sheet 11 of 14

Important Note: These maps illustrate the Build Alternatives(alignments, stations, TMF, and ancillary facilities). Locations represented are approximate and are subject to change during the planning process.







Tunnel Sections

Surface & Elevated Sections

Air Quality

Analyzed Intersections

1000-Foot Radius of Analyzed Intersections

Vibration & Noise

Moderate Noise Impacts

Severe Noise Impacts

Environmental Justice Areas

Minority Population

Low Income Population

Community Facilities

Surface Waters

Neighborhood Boundaries

Parklands

County and City

State

Map legend includes only features found on each sheet's coverage

Baltimore Highlands Elementary School

Kingdom Hall of Jehovah's Witnesses

Medmark Treatment Centers Cherry Hill

Mount Auburn Cemetery

BALTIMORE-WASHINGTON SCMAGLEV PROJECT

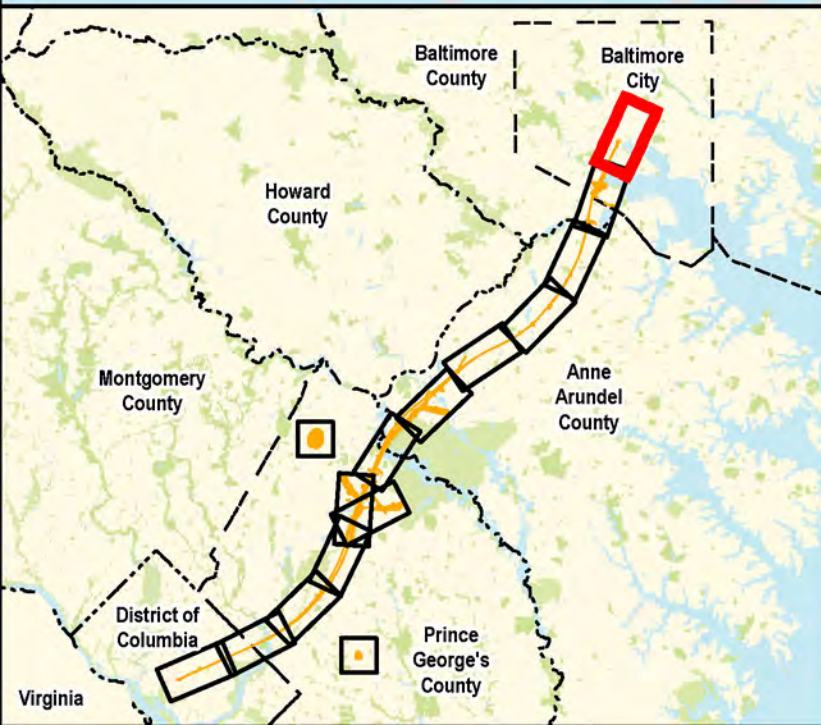
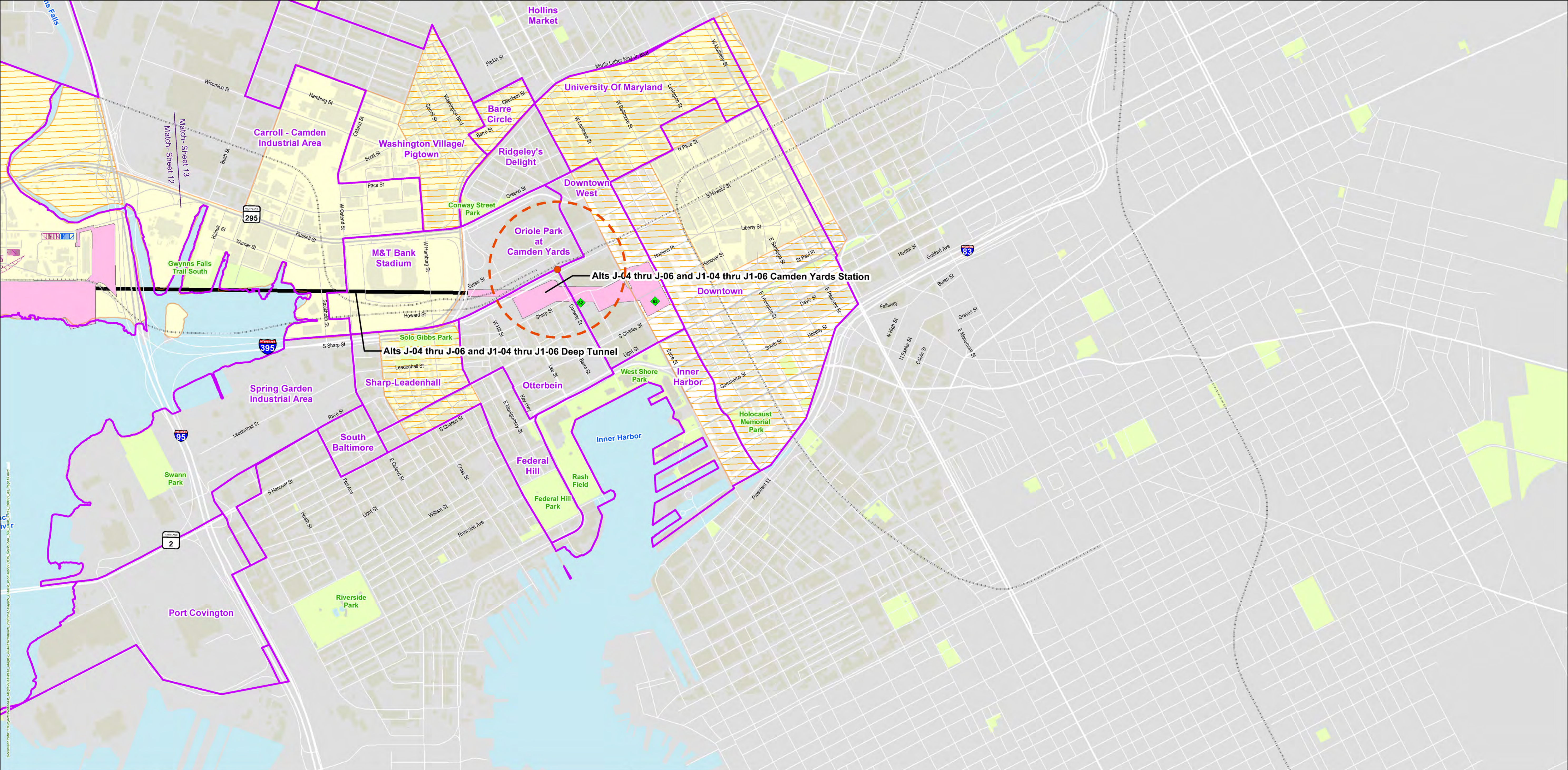
Socioeconomic and Community Resources

Sheet 12 of 14

Important Note: These maps illustrate the Build Alternatives(alignments, stations, TMF, and ancillary facilities). Locations represented are approximate and are subject to change during the planning process.

BALTIMORE-WASHINGTON SUPERCONDUCTING MAGLEV PROJECT





Tunnel Sections

Surface & Elevated Sections

Air Quality

Analyzed Intersections

1000-Foot Radius of Analyzed Intersections

Environmental Justice Areas

Minority Population

Low Income Population

Community Facilities

Surface Waters

Neighborhood Boundaries

Parklands

County and City

Community Facilities

62

Old Otterbein United

63

Concentra Urgent Care - Baltimore Downtown

Map legend includes only features found on each sheet's coverage

BALTIMORE-WASHINGTON SCMAGLEV PROJECT

Socioeconomic and Community Resources

06001,2001,800

Feet

Sheet 13 of 14

Important Note: These maps illustrate the Build Alternatives(alignments, stations, TMF, and ancillary facilities). Locations represented are approximate and are subject to change during the planning process.

BALTIMORE-WASHINGTON  
SUPERCONDUCTING  
MAGLEV PROJECT



